

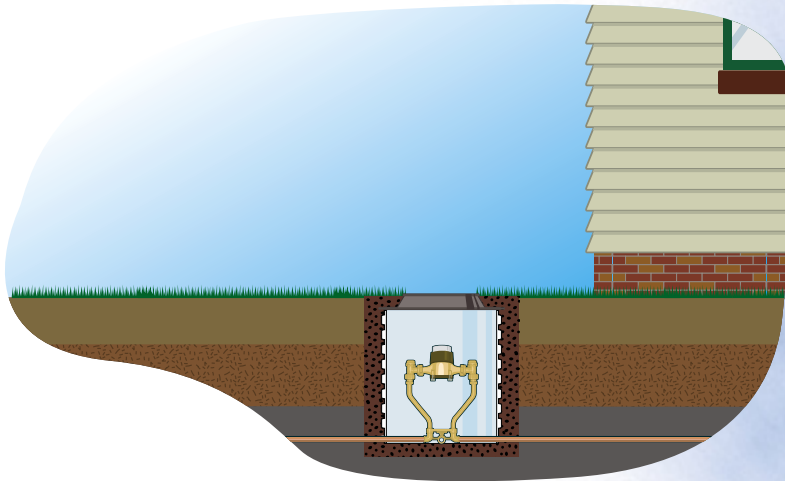


GAS & WATER METER PITS

THE DURABLE, ECONOMICAL SOLUTION

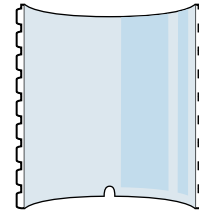
When it comes to selecting a meter pit, your demands are clear. You need a high-quality product designed for easy installation and performance without fail – in all kinds of weather and in all kinds of soils. Plus, budget-sensitive pricing and product availability that let you offer your customers the savings and service they deserve.

Hancor Meter Pits are the durable, economical solution. Made of rugged, white, high-density polyethylene (HDPE), these quality meter pits are light, strong and dependable. They'll never rust, corrode or crumble like steel or concrete enclosures can. And because they're more durable than PVC alternatives, they can be installed year-round without cracking.



FEATURES

- 18", 21" and 24" (450, 525 and 600mm) diameters.
- Precut lengths of 24", 30", 36" and 48" (600, 750, 900 and 1200mm)
- Uncut 12' (3.7m) lengths for easy stocking and handling. Custom-cut pits on demand.*
- Bright white surface reflects light for better readability. Meter readers are more efficient.
- Dual-wall design provides extra strength without extra weight.
- Easy to install.
- Corrugated HDPE design makes meter pits extra strong and lightweight, and easy to handle.
- Corrugations lock into soil – won't slip or shift.
- Pre-cut notches accommodate incoming and outgoing pipes and saves installation time.



*For meter pit and other vertical installations, the maximum height recommendation is 60" (1.5m).

Hancor Service: Hancor representatives and engineers are committed to providing you with the answers to all your questions, including specifications, installation, backfill recommendations and more.





INSTALLATION GUIDELINES

NON-TRAFFIC AREAS

- 1) Install Hancor Meter Pits using native soil as an envelope material ONLY if soil can be tamped in 1 ft. layers.
- 2) If soil is unstable (muck, peat or other soil that cannot be compacted), use one of the following Preferred Envelope Materials:

Preferred Envelope Material (Minimum Envelope Thickness)

- Crushed Stone 3 inches (0.08m)
- Gravel..... 3 inches (0.08m)
- Compacted Sand 6 inches (0.15m)

- 3) Meter pit lid must be installed according to lid manufacturer’s recommendations.

TRAFFIC AREAS

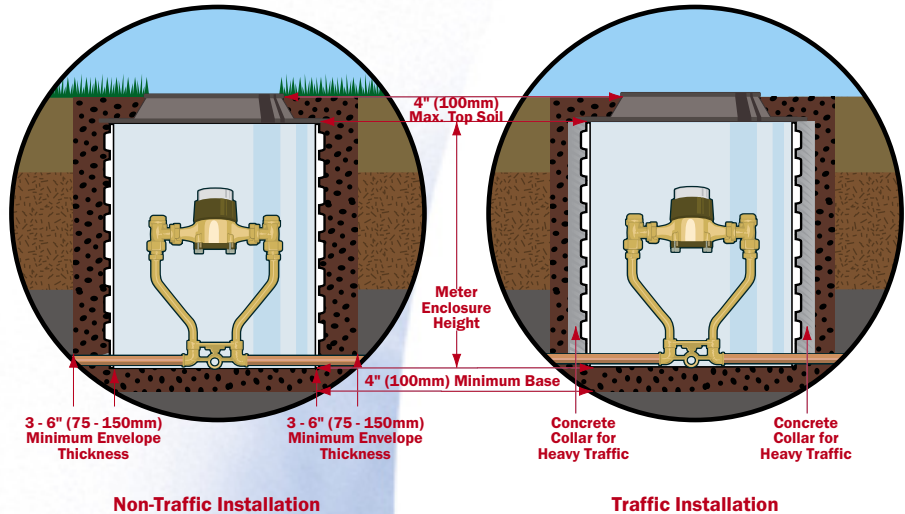
- 1) A concrete collar, capable of transferring all traffic loads to the surrounding soil, is required around the unit.
- 2) Meter pit lid must be installed according to lid manufacturer’s recommendations and on top of concrete collar to transfer traffic load.

Note 1:

Meter pit access for maintenance, inspection, or other reasons should be made in strict accordance with OSHA recommendations for confined space entry. Lid assemblies are provided by the distributor.

Note 2:

This product must be securely enclosed at the time of installation. Open or unsecured product creates a risk of serious injury or even death to adults, children or animals who may enter or fall into this product. Hancor assumes no liability for losses resulting from improper usage, installation, or failure to secure this product.



SCOPE

This specification describes 18", 21" and 24" (450, 525 and 600mm) Hancor’s Meter Pit for use as meter enclosures.

REQUIREMENTS

- Hancor Meter Pits shall be white in color.
- Meter pits shall be available in 18", 21" and 24" (450, 525 and 600mm) diameters with a smooth interior and annular exterior corrugations.
- Based on ASTM D2412 at 5% deflection the pipe stiffness for 18", 21" and 24" (450, 525 and 600mm) Meter Pits shall be 40 pii, 34 pii and 34 pii respectively.
- The pits shall be available in precut lengths of 24", 30", 36", and 48" (600, 750, 900 and 1200mm), and 12' (3.7m) uncut lengths.
- Precut Meter Pits shall be notched at 0 and 180 degrees at the base of the pit to accommodate inlet and outlet pipes.

MATERIAL PROPERTIES

Meter pits shall be high density polyethylene meeting ASTM D3350-04 minimum cell classification 424420 B.

INSTALLATION

Installation shall be in accordance with Hancor installation instructions or those issued by regional, state, or local agencies.

NOMINAL DIMENSIONS

Inner Diameter, in. (mm)	18 (450)	21 (525)	24 (600)
Outer Diameter, in. (mm)	21.5 (546)	24.5 (622)	28.4 (721)
Weight, lbs./ft. (kg/m)	6.3 (9.4)	8 (11.9)	10.7 (15.9)

All sales of Hancor product are subject to a limited warranty and purchasers are solely responsible for installation and use of Hancor products and determining whether a product is suited for any specific needs. Please consult a full copy of Hancor’s Terms and Conditions for Sale for further details.

DIRECT CONTACT

Customer Service
 888-FOR PIPE (367-7473)
 Fax 888-FAX PIPE (329-7473) 24 hours a day

ELECTRONIC MEDIA

Web Site
 For further details on product specifications, visit the Design Aids section of our On-Line Pipeline – www.hancor.com