



AGRICULTURAL DRAINAGE SOLUTIONS to Maximize Crop Production



36" x 60" (900 x 1500mm)
BLUE SEAL

36" x 60" (900 x 1500mm)
SURELOK



LAND DRAINAGE PAYS OFF YEAR AFTER YEAR

Land drainage has proven to be one of the most effective farming tools available to increase the production capability of your land. For over 100 years, Hancor has helped American farmers get the most out of their land investment through innovative drainage and water conservation solutions.

Drainage is used to remove excess water from the root zone of crops, thereby aerating the root area and improving the plant's uptake of nutrients. The result is vigorous early and continued plant growth for maximum yield at harvest time.



HANCOR HDPE – THE RIGHT SOLUTION FOR AGRICULTURE

Hancor's commitment to technical excellence is ideally suited to the technical advances – such as GPS mapping and infrared imaging – that are transforming the drainage industry.

Hancor products are made from one of the most durable materials used in drainage systems: High Density Polyethylene (HDPE). Hancor drainage systems give you a long-term solution that's also cost-effective.

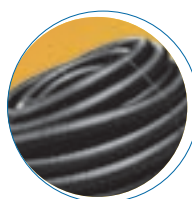
HDPE pipe provides for safe, easy, efficient installations without breaking, splitting or cracking, and is more impact-resistant than PVC, ABS or styrene.

HDPE will not corrode, is unaffected by fertilizer and herbicidal chemicals, is impact resistant and can be installed in subzero temperatures.

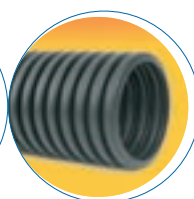
NOT ALL HDPE PIPE IS CREATED EQUAL

Hancor products are engineered to the highest quality standards, using the most advanced manufacturing processes. Here's what you should look for in HDPE pipe.

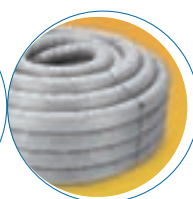
- Does the color of the pipe look consistent?
- Are the perforations in the valley of the corrugation?
- Are the slots all the same size and cleanly cut?
- Do the die blocks line up?
- Are the manufacturer's fittings treated with UV protection and do they fit properly?
- Is the center so small the product has stress cracking in the last few feet?
- Are the die seams on top of the corrugation rather than in the valley?
- Does the density of the raw material provide strength plus impact resistance?



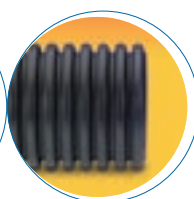
HEAVY DUTY



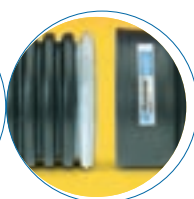
AASHTO



GRAIN-DRI™



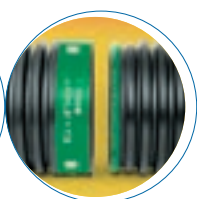
HI-Q®



SureLok®



BLUE SEAL®



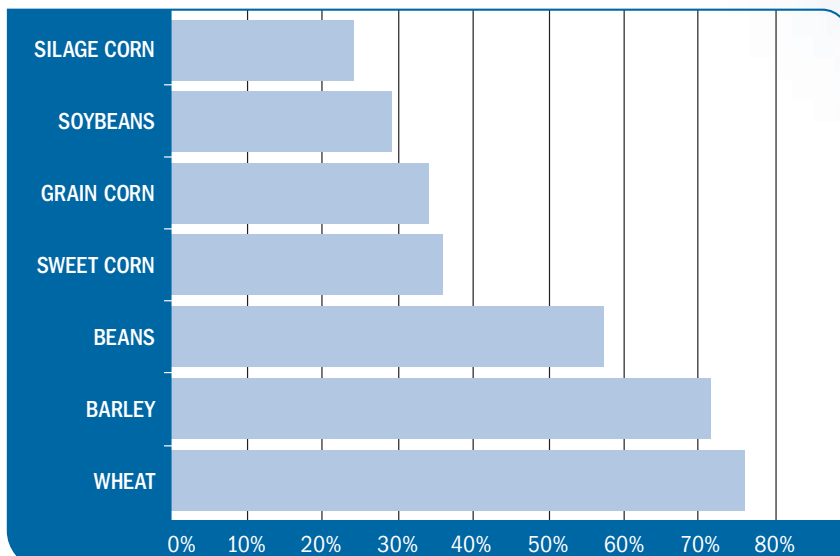
ECOFIRST™

INNOVATIVE SOLUTIONS FOR AGRICULTURE

HOW FARM DRAINAGE PAYS OFF

- Improved Land Use and Efficiency**
 Well drained land increases in value. Subsurface drainage is a more economical and efficient way to increase production and income than buying additional land.
- Better Soil Conservation**
 Land drainage helps to build improved soil structure and increase water holding capacity which reduce the severity of both drought and erosion.
- Deeper Root Development**
 Drainage removes excess moisture and establishes a lower water table. It promotes improved root growth and penetration which makes more moisture and nutrients available for plant growth.
- Increased Crop Yield**
 Good drainage helps to prevent surface crusting and surface flooding, and makes herbicides and fertilizers more effective. It results in increased crop yields – from 24% to 76%.
- Longer Growing Season**
 Drainage allows for up to two weeks earlier planting, and the chance to work later in the year to complete fall tillage programs.
- Improved Plant Quality**
 Plant and root growth will be more vigorous on well drained soils. Crops can be harvested at their peak in fall, while minimizing moisture content.
- Better Livestock Farming**
 Improved drainage of pasture land helps to produce improved grazing management.

INFORMATION FROM OVER 125 DRAINAGE EXPERIMENTS INDICATES DRAINAGE CAN INCREASE YIELDS 24% - 76%





HANCOR PRODUCTS TYPICALLY USED IN AGRICULTURAL APPLICATIONS

HEAVY DUTY (SINGLE WALL)

Typical Applications: field drainage, grain aeration, land reclamation, waterways, terracing

Diameters: 3"-12" (75-300mm)

Hancor Heavy Duty annular corrugated single wall pipe comes in plain, perforated and perforated-with-wrap styles. It is available with internal, external snap or split band couplers.

Meets SCS 606, 3"-6" (75-150mm) ASTM F405, 8"-12" (200-300mm) ASTM F667.

AASHTO (SINGLE WALL)

Typical Applications: waterways, terracing, culverts

Diameters: 3"-24" (75-600mm)

AASHTO annular corrugated single wall pipe comes in plain, perforated, and perforated wrap styles. It is available with internal, external snap or split band couplers.

Meets SCS 606, Corps of Engineers Guide spec. 2630, 3"-6" (75-150mm) ASTM F405, 8"-24" (200-600mm) ASTM F667, 4"-10" (100-250mm) AASHTO M252, Type C, 12"-24" (300-600mm) AASHTO M294, Type C.

GRAIN-DRI™

Typical Applications: grain aeration

Diameters: 12"-36" (300-900mm)

This perforated polyethylene pipe can be wrapped with a coarse polypropylene fabric to maximize airflow around the pipe. It is ideal for preserving grain delivered to flat storage facilities.

Meets SCS 606, Corps of Engineers Guide spec. 2630, 12"-36" (300-900mm) AASHTO M294, Type S.

HI-Q® (DUAL WALL)

Typical Applications: land reclamation, waterways, terracing, irrigation ditch enclosures

Diameters: 4"-30" (100-750mm)

Hi-Q dual wall pipe features an annular corrugation with smooth interior. It uses external snap or split band couplers depending on diameter.

Meets SCS 606, Corps of Engineers Guide spec. 2630, 4"-10" (100-250mm) AASHTO M252, Type S, 12"-30" (300-750mm) AASHTO M294, Type S.

SURE-LOK® F477 (DUAL WALL)

Typical Applications: land reclamation, irrigation ditch enclosures, waterways

Diameters: 4"-60" (100-1500mm)

Sure-Lok F477 pipe has an annular corrugation with a smooth interior wall and provides a rubber gasketed bell-and-spigot joining system that meets ASTM F477 specifications for soil-tight and silt-tight connections that assure alignment and reliability.

Meets SCS 606, Corps of Engineers Guide spec. 2630, 4"-10" (100-250mm) AASHTO M252, Type S, 12"-48" (300-1200mm) AASHTO M294, Type S.

BLUE SEAL®

Typical Applications: field drainage, detention systems, irrigation ditch enclosures and cross, slope or edge drains

Diameters: 12"-60" (300-1500mm)

BLUE SEAL is a revolutionary gravity flow, watertight pipe – described as the best watertight solution on the market. It features a highly engineered integral bell-and-spigot joining system that utilizes expanding structural foam technology for gasket support. The coupling system provides uniform tolerances to ensure high, consistent performance.

Meets SCS 606, Corps of Engineers Guide spec. 2630, 4"-8" (100-200mm) AASHTO M252, Type S, 12"-60" (300-1500mm) AASHTO M294, Type S.

ECOFIRST®

Typical Applications: gravity flow drainage applications

Diameters: 4"-30" (100-750mm)

Made with 50% recycled polyethylene, ECOFIRST provides an environmentally friendly solution that's big on performance, meeting AASHTO M252 or M294 performance requirements. It has smooth interior and annular exterior corrugations. Its bell-and-spigot joint provides great structural integrity.

Meets SCS 606, 4"-8" (100-200mm) AASHTO M252*, Type S, 12"-30" (300-750mm) AASHTO M294*, Type S.

*Product manufactured with 50% recycled resins.

FITTINGS: SINGLE AND DUAL WALL

Hancor manufactures a complete line of dual and single wall fittings to complement your drainage needs.

All sales of Hancor product are subject to a limited warranty and purchasers are solely responsible for installation and use of Hancor products and determining whether a product is suited for any specific needs. Please consult a full copy of Hancor's Terms and Conditions for Sale for further details.

Direct Contact

Customer Service

888-FOR PIPE (367-7473)

Fax 888-FAX PIPE (329-7473) 24 hours a day

Application Engineering

For technical questions, call
800-2HANCOR (242-6267), ext. 809

Electronic Media

Web Site

Find market- and application-specific information and the latest industry news at our On-Line Pipeline – www.hancor.com

Hancor®, EcoFirst®, BLUE SEAL®, Sure-Lok®, Hi-Q® and Grain-Dri™ are registered trademarks of Hancor, Inc.
© 2003 Hancor, Inc. 1900-426
#1401/1103